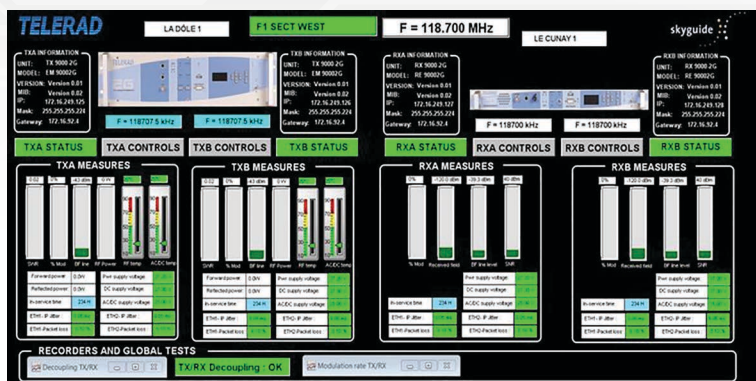




Aeronautical and Maritime Radiocommunication Systems

# REMOTE CONTROL AND MONITORING SYSTEMS

RCMS



## OVERVIEW

TELERAD's RCMS is a software tool for configuration, monitoring and diagnosis of the radio systems provided by TELERAD. It is compatible with our current 2G series radios and some of our previous technologies. It perfectly suits both ATC and military applications in VHF and/or UHF bands.

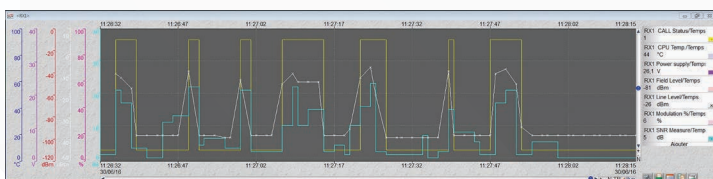
TELERAD's RCMSs are based since 1994 in the French SCADA platform Areal Topkapi Vision 32 who has been proved versatile, robust and intuitive for dozens of customers all around the world

## MAIN FEATURES

- Reads the radios' status (configuration, alarms, operational values...)
- Controls remotely the radios' parameters
- Monitors other TELERAD equipment such as switching units, combiners, filters...
- Monitors other equipment (non TELERAD) such as UPS, alarms, ventilators, other radios...
- Organizes the information hierarchically
- Allows maintenance operations
- Uses of separated users with different levels of authorization
- Configures different levels of alarms
- Manages these alarms creating automatic answers for particular cases

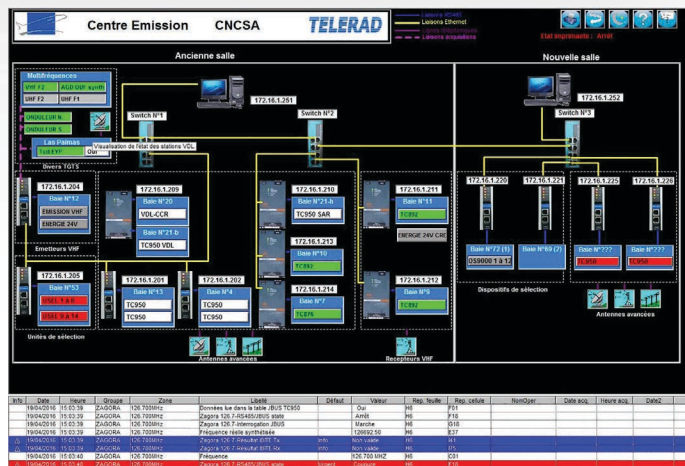


- Keeps an event log with the information of alarms and commands
- Makes easier maintenance operations by supplying VSWR, frequency aging, average modulation rate or decoupling alarm information
- Creates registers, graphics and statistics with historical values that can be printed, exported or converted into excel file
- Provides a user friendly final interface



## COTS OR CUSTOM, YOU DECIDE!

- An off the shelf product, the C-RCMS 2G is proposed to monitor a limited number (4 transmitters and 4 receivers) of 2G series.
- A customized RCMS can be created specially to our customers and adapted to their needs (number of equipment, architecture, presentation...).



## WHEN AND WHERE YOU NEED IT

The RCMS supports two different network architectures according to customer's needs.

- Local RCMS for monitoring airports or portable stations from their own facilities.
- Remote RCMS for monitoring distant stations from national control centres.

## AVAILABLE PC ARCHITECTURES:

- Single PC
- Distributed multipost (each PC takes care of an independent part of the system)
- Centralised multipost (a server PC communicates with the radios and one or several client PCs offer local man machine interfaces)
- Redundant positions (PC Main and PC Standby)

## SUPPORTED O.S.

- Windows XP
- Windows 7
- Windows 8
- Windows 10

## SUPPORTED PROTOCOLS

- JBUS for all TELERAD's radios
- SNMP for TELERAD's 2G series radios
- Other protocols can be added under demand for customized applications

## ALL KINDS OF SUPPORTS

- Leased line
- VSAT
- Microwave link
- Optic fiber

