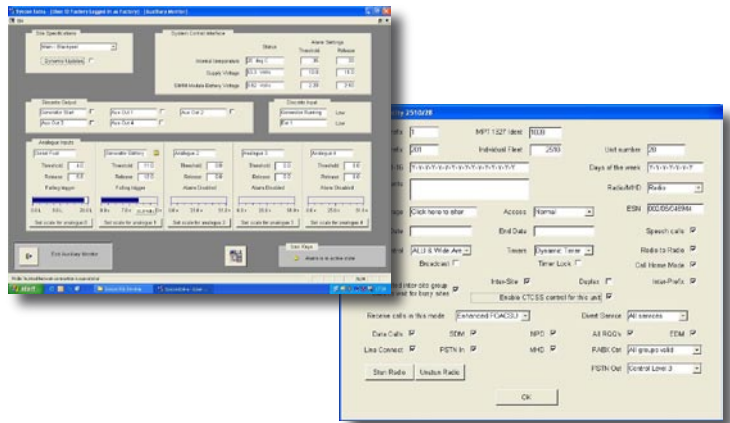


Network Management (SYSCON)

Fylde's System Control Terminal, SYSCON, operates in conjunction with the infrastructure to provide user management and system control functions. SYSCON offers a full set of diagnostic tools, covering every aspect of network operation.

User Control

- User management allows fine grain control of subscribers and their facilities.
- Automatic call queuing for called party and channel busy.
- Calls automatically connect when a channel or called party becomes free.
- Call records: each call made throughout the network is logged.
- Calling and called parties are logged, along with 17 other attributes.
- Call timers - controlled by call type and time of day or subscriber.
- PABX / PSTN - control of prohibited numbers.
- Coverage - controls the radios roaming capability.



Remote monitoring..

- Alarms based on site status - generator fuel - battery voltages - intruder - etc.
- Forwarding of system events via e-mail or text message.

Remote client..

- The Remote Client package allows re sellers to remotely configure their allocated users, using a web browser interface.

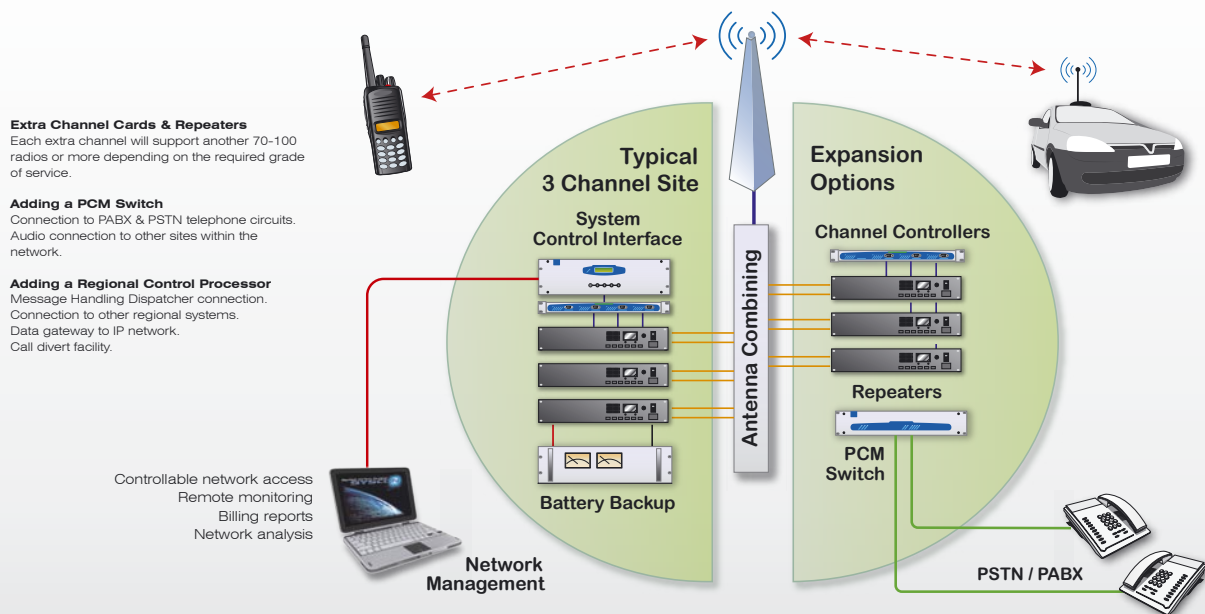
Network analysis..

- Automatic creation of usage summary.
- Call logging - detailed record of each call.
- Call analysis - statistical analysis of the raw data.
- Report generation - detailed activity for a radio or a group of radios.

Multi region support..

- SYSCON Provides full control of the system from one terminal.

MPT1327 System Example



System Control Interface (SCI)